

# Singapore's Eco-Link Biodiversity Overpass - Linking Nature Reserves, Connecting People



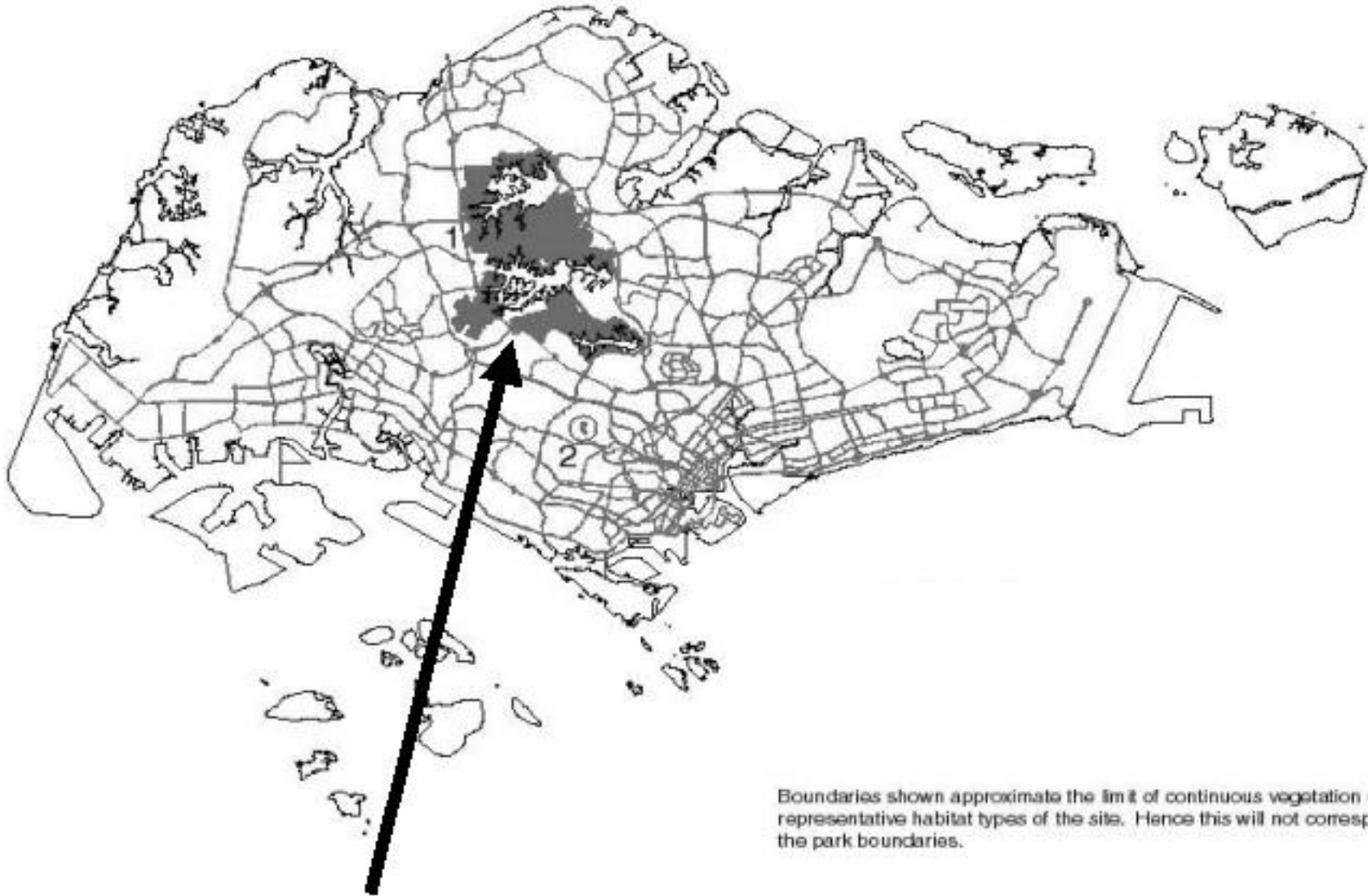
November 2013  
National Parks Board



# Contents

- Location
- Background
- Why have this Project
- Pre-Construction Works
- Stakeholder Involvements
- Future Works

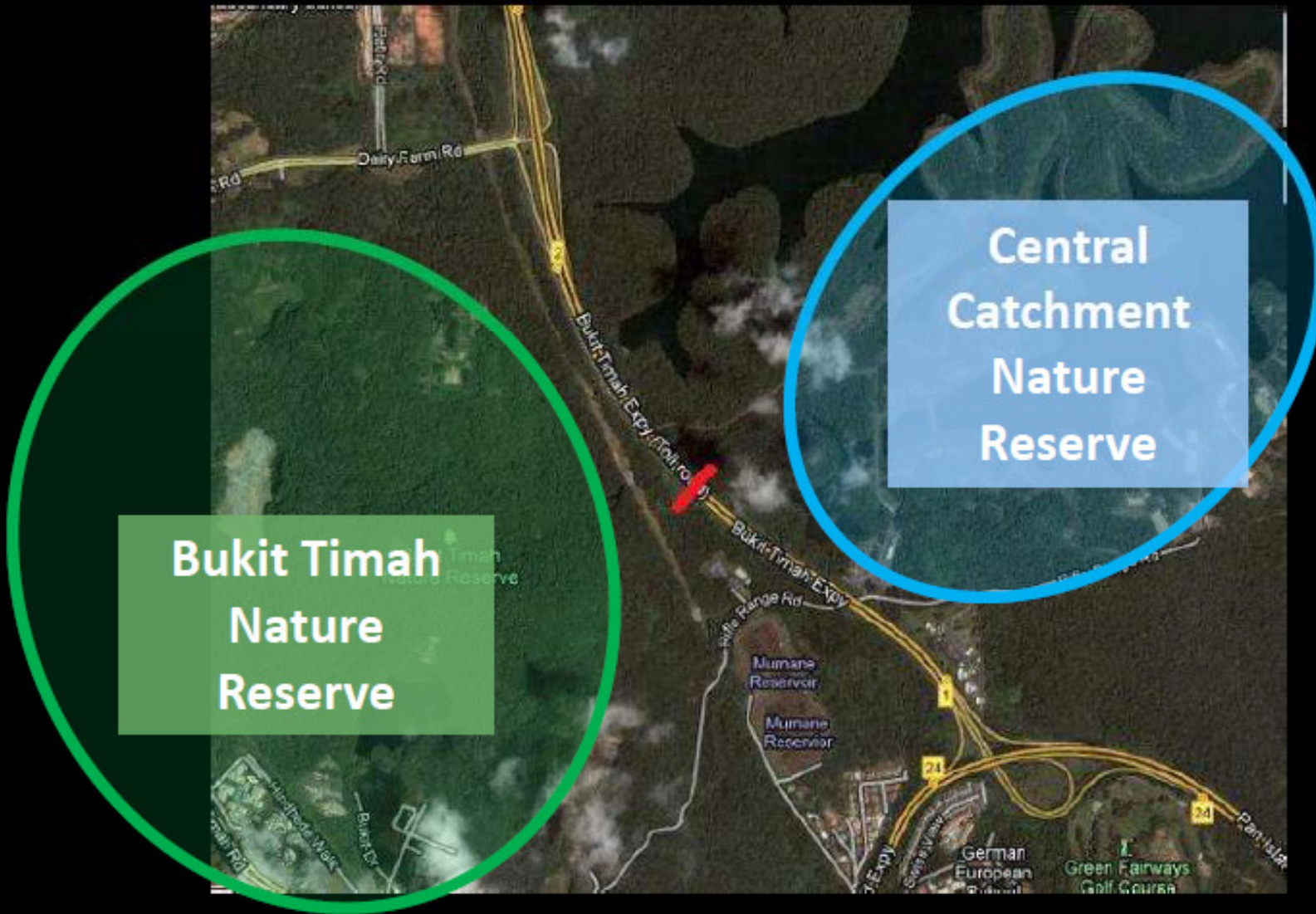
NATURE AREAS - NATURE RESERVES & NATIONAL PARKS  
(SGP REVIEW 2000)



Boundaries shown approximate the limit of continuous vegetation of good representative habitat types of the site. Hence this will not correspond to the park boundaries.

**CENTRAL NATURE RESERVE**

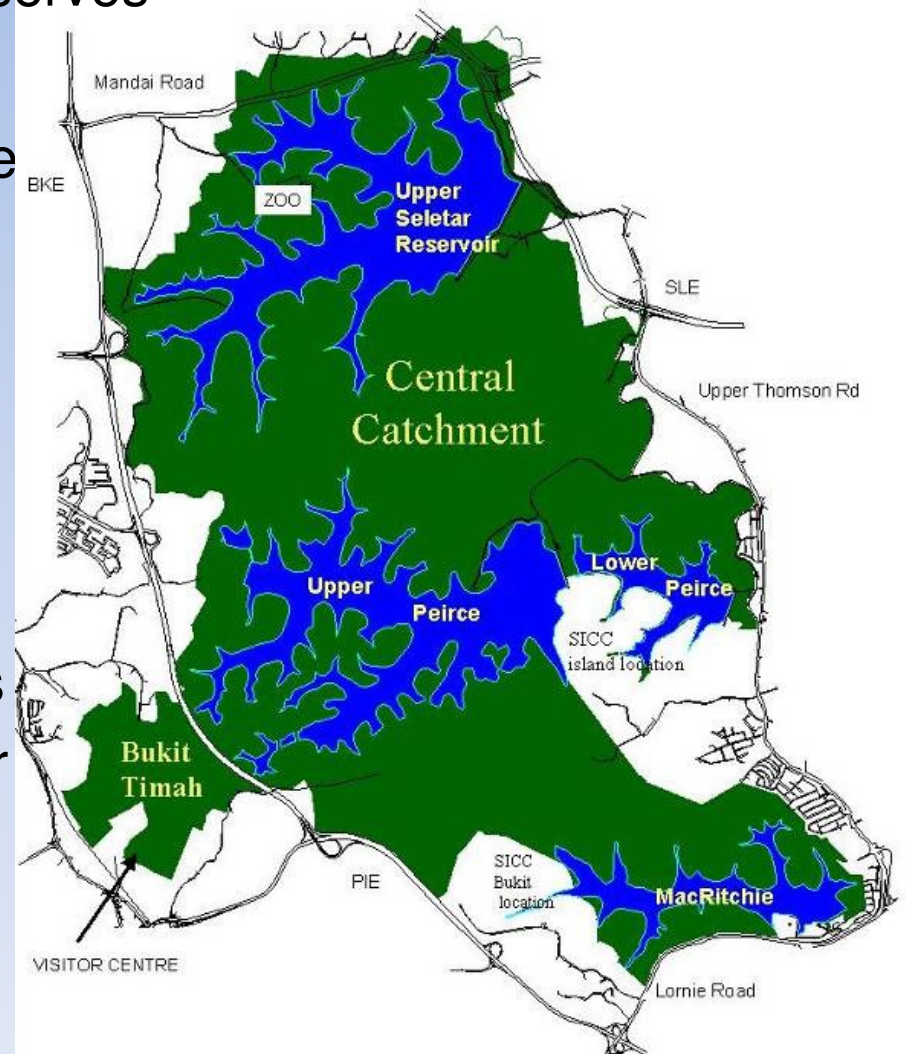
# Where is Eco-Link@BKE ?



# Central Nature Reserve

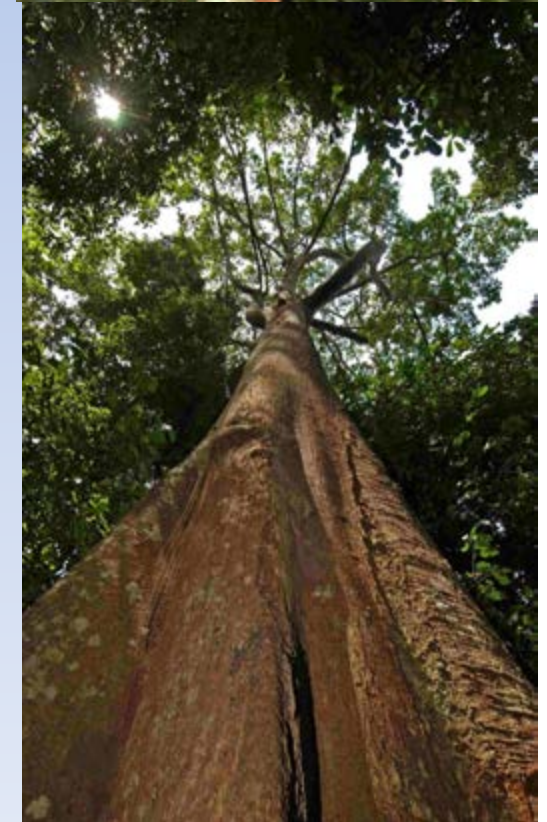
Singapore's 2 largest Nature Reserves

1. Bukit Timah Nature Reserve (163ha) & Hindhede
  - Dairy Farm Nature Park
  - Additional forested buffer areas total 140ha
2. Central Catchment Nature Reserve (3043ha)
  - MacRitchie Reservoir areas
  - Lower, Upper Peirce, Upper Seletar Reservoir Parks
  - Nee Soon, Mandai, Chestnut, Springleaf



# Biodiversity in the Central Nature Reserve of Singapore:

- ◆ Vascular plants – 1190 species (1506 species for Singapore)
- ◆ Mammals – 44 species (50)
- ◆ Birds – 207 species (375)
- ◆ Reptiles – 72 species (108)
- ◆ Amphibians – 25 species (27)
- ◆ Butterflies – 156 species (306)
- ◆ Dragonflies – 79 species (124)



# Why have the Eco-Link?



Photo Credit: Mishak Shunari

# We Don't Want This to Happen



Flattened Pangolin

23.08.2005 12:26







Photos by Chung Yi Fei

2012-07-29 2:49:04 PM M 5/5

28°C



CNR 33 CAM 33



2011-09-02 10:38:51 AM M 1/5

0 25°C



CNR 54 CAM 54

